

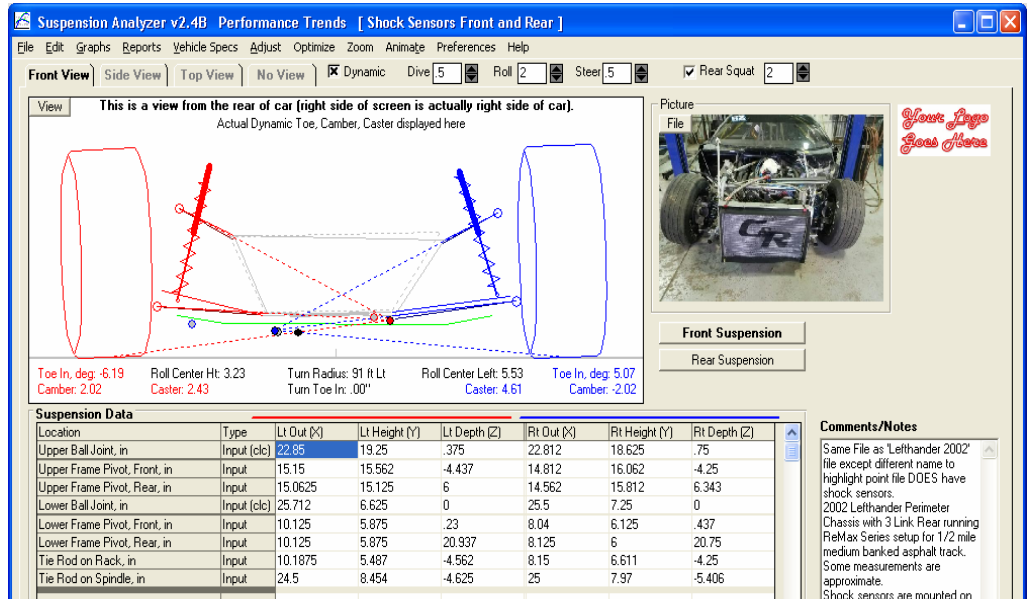
# 2017: Latest News



## Suspension Analyzer Pro v2.4 B We released a new version of Suspension Analyzer, now v2.4 B.

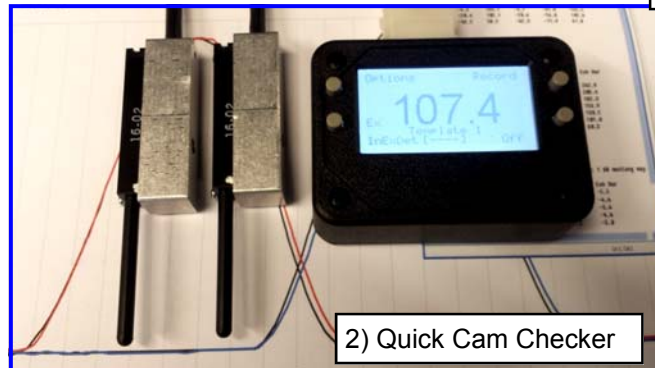
It's new features include (Fig 1):

- Front solid axle suspensions.
- 2 new steering options.
- Leaf Springs with panhard bar or watts link.
- Front, rear or all wheel drive
- Unsprung weight input.
- New "Clc" utilities for calculating King Pins dimensions for solid axle front suspensions, and bump springs (including "stacked springs").
- "Pitch" motion is now an option.
- Bump springs for front or rear.
- Program now shows new outputs, like Bump Spring Force and Dynamic Roll Stiffness, Roll Couple, Front and Rear Lateral Load Transfer, and Natural Frequencies, as the suspension moves.
- Ride Height is now an input and you can watch it move with dive, roll, steer and pitch.
- Include a picture file for printouts.
- Reads some Bill Mitchell's WinGeo (.gem) files.
- Remembers inputs for "Clc" utility screens.



## Quick Cam Checker We've updated our Quick Cam Checker (Fig 2):

- Better mounts for lift sensors.
- Mounting brackets for 602-604 crate motors.
- Software now lets you compare measured profiles with a "baseline" you have measured. This lets you quickly spot differences between 2 cams and is very handy for track tech inspectors.
- Software now reports duration and events at several lifts.



2) Quick Cam Checker

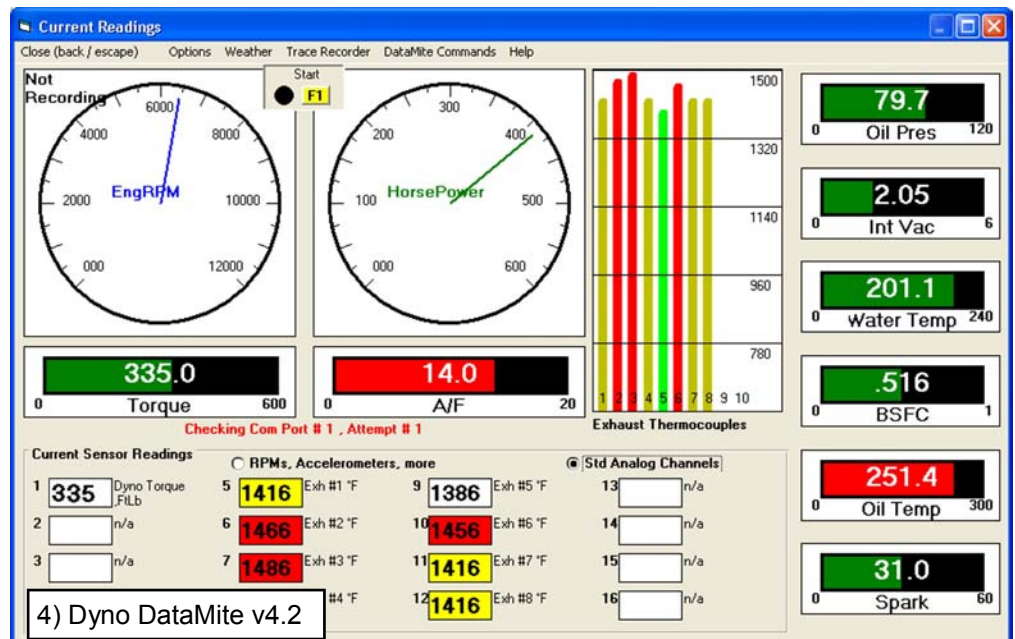
## 3) Valve Spring Tester



## Valve Spring Tester 1.1C

We've updated our Valve Spring Tester software to 1.1C with these improvements (Fig 3):

- Spring height reports for various force increments, like every 10 lbs.
- 4 Test Types for "bent" force curves (like 2 stage springs), or not compressing the spring into coil bind.



4) Dyno DataMite v4.2

- Individual Seated Spring Heights for each spring to allow for variations in heads, valves, retainers, etc.
- New Preference eliminates error messages if Open or Seated Heights you have entered for a spring are incorrect

**DataMite v4.2** We'll be releasing new v4.2 software for our DataMite line of data loggers. Fig 4. Major new features include:

- Compatible with new, more accurate DataMite III and DataMite 4 hardware.
- More gauges for Dyno Enterprise display.
- New track mapping features.

**Drag Race Analyzer v3.4B**

This update's new features include, letting you specify up to 10 transmission gears, specifying converter lockup at a particular gear, more advanced graphing features, an new example vehicle files. Fig 5.

**Blowby Recorder** is now compatible with new 1.0 and 0.3 CFM ranges for small karting motors, and letting you pick a new LPM (liters per minute) for display, and a new tach input for recording RPM. Fig 6 and 7.

**Weather Wiz** now will "talk" to the DataMite III and DataMite 4 loggers. Fig 9. Software enhancements make it easy to record weather and tune jets on the dyno, then go to the track and record weather with your logger and recommend jet changes.

**Electronic Velocity Probe** being released soon for Port Flow "Head Porter" version of software. Fig 10 and 11.

**Shock Dyno** will soon have a software update to v1.1C. Major changes will be recording several tests to 1 file, and the ability to control our Spring Tester "add on". Fig 12

Watch our website and get on our newsletter mailing list for info on new products.

